

SPACE SCIENCE CAMP 2022 – CMSHS

# MIMA

(Monitoring Illegal Mining  
Activities) in remote areas



SPACE SCIENCE CAMP 2022 - CMSHS

# OBJECTIVES

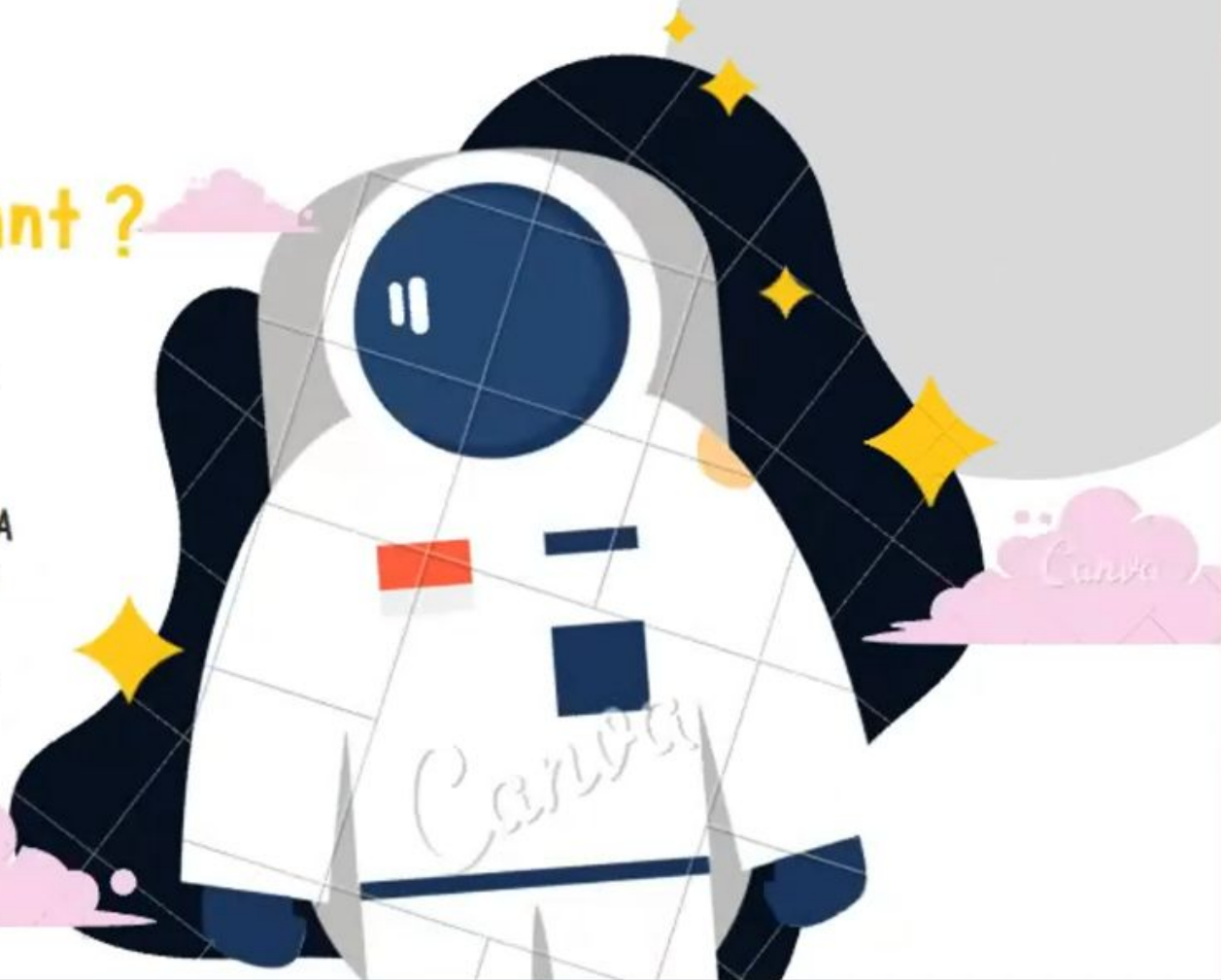
Satellite that will monitor illegal mining activities in remote areas of the country. This is in an attempt to discourage or punish the unlawful use of our natural resources and to preserve our nature.



2022

## Why is it important ?

Mining activities can have a major environmental and health impact. Such activities have the potential to cause soil-erosion and contaminate streams and wetlands in remote areas. The MIMA satellite is important as it'll provide us with useful information about the dangers of illegal mining activities. The data that will be gathered from the MIMA satellite will also serve as an environmental crime evidence in the field of mining.





## KEY FEATURES

**Synthetic Aperture Radar (SAR)** – used to track mining activities; can recognize changes in the surface of mountains and other remote areas where mining is can be performed. This is also useful because such changes can be monitored without the obstruction of clouds.

**Optical imagers** – this will operate alongside SAR to capture images (if possible) for observation purposes. Images captured with this can also serve as additional environmental crime evidence.

2022



# REFERENCES

Demirel, N., Emil, M. K., & Duzgun, H. S. (2011). Surface coal mine area monitoring using multi-temporal high-resolution satellite imagery. *International journal of Coal geology*, 86(1), 3-11.

Matikainen, L., Lehtomäki, M., Ahokas, E., Hyyppä, J., Karjalainen, M., Jaakkola, A., ... & Heinonen, T. (2016). Remote sensing methods for power line corridor surveys. *ISPRS Journal of Photogrammetry and Remote sensing*, 119, 10-31

Ouchi, K. (2013). Recent trend and advance of synthetic aperture radar with selected topics. *Remote Sensing*, 5(2), 716-807.